

True productivity for large format scanning

Increase your scanning productivity by up to 30%

The NEW ScanStation

Requested by customers, powered by Intel™
Designed by Context

Intel Core i7

Full HD 21.5 inch multi-touch display



Scan to Print or Scan to File

The NEW ScanStation is designed specifically for productivity, powered by new unique features that reduces the digitization process. With 30% more productivity than your current scanner, you get an unmatched Return Of Investment.

Get best-in-class image quality and the most efficient way to scan, copy, file and archive any wide-format document.

REimage, a new Context technology

No need to retrieve and rescan your original paper documents. Virtually go back to your RAW scans and capture specific contents, which you did not choose to include in your first file formats. We call it REimage, only available with Context ScanStations.

The all-included solution elements

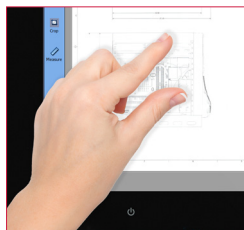
The Context ScanStation includes a high-volume scanner, ScanStation controller with high-end features for scan + copy and a height adjustable stand.



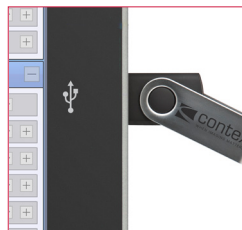
The NEW Context ScanStation is recommended for high productivity



Not just a bigger screen. A full featured productivity controller for all your scanning needs



The 21.5" wide-screen controller offers all zoom, pinch and swipe functions



Scan to your choice of destination via Gigabit Ethernet or USB3



Best in test - year after year
Context HD Ultra awarded
Best Wide Format Scanner
for third consecutive year

	IQ Quattro 4450 ScanStation	IQ Quattro 4490 ScanStation	HD Ultra i4250s ScanStation	HD Ultra i4290s ScanStation	HD 5450 PLUS ScanStation
Scanning Speed (inch/sec.): Scanner speed while scanning 36-inch wide document.					
RGB Color	7 ips 200 dpi	14 ips 200 dpi	4 ips 200 dpi	8 ips 200 dpi	3 ips 400 dpi (Turbo)
Upgradable	Yes. To 14 ips	-	Yes. To 8 ips	-	-
Grayscale / Monochrome	14 ips 200 dpi	14 ips 200 dpi	12 ips 200 dpi	12 ips 200 dpi	12 ips 400 dpi (Turbo)

Productivity (documents/hour): Batch scanning for 60 minutes. Includes paper load and eject time. Measured in completed scans:

Arch E-size, RGB Color, 200dpi	394	626	302	455	258
--------------------------------	-----	-----	-----	-----	-----

The New ScanStation Controller:

REimage by Contex	Virtually rescan documents directly on The New ScanStation Controller				
CPU	Intel Inside® 4th generation Intel® Core i7 3.2GHz				
Memory and HDD	4GB DDR3 (dual channel) / 2.5" SATA HDD 500G				
Display and Touch	21.5" Widescreen HD TFT LCD, 1920x1080 dpi				
Connectivity	2 x Gb Ethernet / 4 x USB 3.0 and 1 x USB 2.0				
Maximum Scan Width	44 inch (1118 mm)		42 inch (1067mm)		54 inch (1372 mm)
Maximum Media Width	47 inch (1194 mm)		44 inch (1120 mm)		56 inch (1422 mm)
Optical Resolution	1200 dpi		1200 dpi		508 dpi
Maximum Resolution	9600 dpi		9600 dpi		9600 dpi
Technology	Contex CleanScan CIS		5 x 4 linear color CCD's (R,G,B and Gray)		4 x 4 linear color CCD's (R,G,B and Gray)
Maximum Media Thickness	0.08 inch (2 mm)		0.6 inch (15 mm)		0.6 inch (15 mm)
Accuracy	0.1% +/- 1 pixel		0.1% +/- 1 pixel		0.1% +/- 1 pixel
Data Capture ¹ (color/mono)	48-bit / 16-bit		48-bit / 16-bit		48-bit / 16-bit
Color Space	Adobe RGB / Device RGB / RAW RGB / sRGB		Adobe RGB / Device RGB / RAW RGB / sRGB		sRGB
USB	USB and Gigabit Ethernet with xDTR2		USB and Gigabit Ethernet with xDTR2		USB
Gigabit Ethernet with xDTR2	•		•		-
Energy Star Certified	•		•		-

Stand:

Working Height	32.8 / 33.8 / 34.8 inch (834 / 859 / 884 mm)	36.3 / 37.3 / 38.3 inch (922 / 947 / 972 mm)	36.0 / 37.0 / 38.0 inch (915 / 940 / 965 mm)
----------------	--	--	--

Controller specifications:

Language versions	Chinese, Dutch, English, French, German, Italian, Japanese, Korean, Polish, Russian, Spanish		
Operating system	Windows 7 embedded		
Fileformats	TIF, JPG, PDF, PDF/A, DWF, CALS, BMP, JPEG-2000(JP2), JPEG2000 Extended(JPX), TIF-G3, TIF-G4, others		
Auto Naming Templates	Configurable Counters, Date, Time and other. Use in folder and filenames or both		
Software ²	AutoCAD®, Microstation™, ArcGIS™ and all other CAD, GIS and other image editing / storage applications		
Power Requirements	100-240V, 60/50Hz, 80W	100-240V, 60/50Hz, 80W	100-240V, 60/50Hz, 180w
Scanner Weight & Dimensions	27 kg, LxWxH: 53.1 x 18.9 x 6.3 inches (135.0 x 48.0 x 16.1 cm)	48 kg, LxWxH: 52.8 x 18.7 x 7.9 inches (134 x 47.5 x 20 cm)	79 kg, LxWxH: 67 x 19 x 7 inches (169 x 47 x 18 cm)
Certifications/compliance	CE, cUL, Customs Union, Ukr, VCCI, FCC Class A, RoHS, ENERGY STAR Certified	RoHS, cUL, CE, Customs Union, CCC, VCCI, KC, Ukr, BSMI, ENERGY STAR Certified	RoHS, cUL, CE, GOST-R, CCC, VCCI, KC, Ukr

1 Bit depth for: Data Capture / Scanner Processing / PC Processing / Image File.

Create an optional 48-bit TIFF image

2 Contex applications create industry standard raster file formats that can be used in any CAD or GIS application.

All trademarks remain the property of their respective holders, and are used only to directly describe the product being provided. Their use in no way indicates any relationship between Contex A/S and the holders of the said trademarks.

Designed for **productivity**, reliability and versatility
- day after day.



The New ScanStation:
- IQ Quattro 4450
- IQ Quattro 4490



The New ScanStation:
- HD 5450 PLUS



The New ScanStation:
- HD Ultra i4250s
- HD Ultra i4290s



Height adjustable stand for optimal ergonomics



Read more at
contex.com



Contex solutions work with all leading large-format printers.
For full list, see www.contex.com

